

# ROD MACKAY

MAUDE, MACKAY & COMPANY LIMITED

604-649-2424

RODMAC@MAUDEMACKAY.COM

WWW.RODMACKAY.COM

302 - 1311 Beach Avenue

Vancouver, BC, V6E 1V6

Year Built: 1989

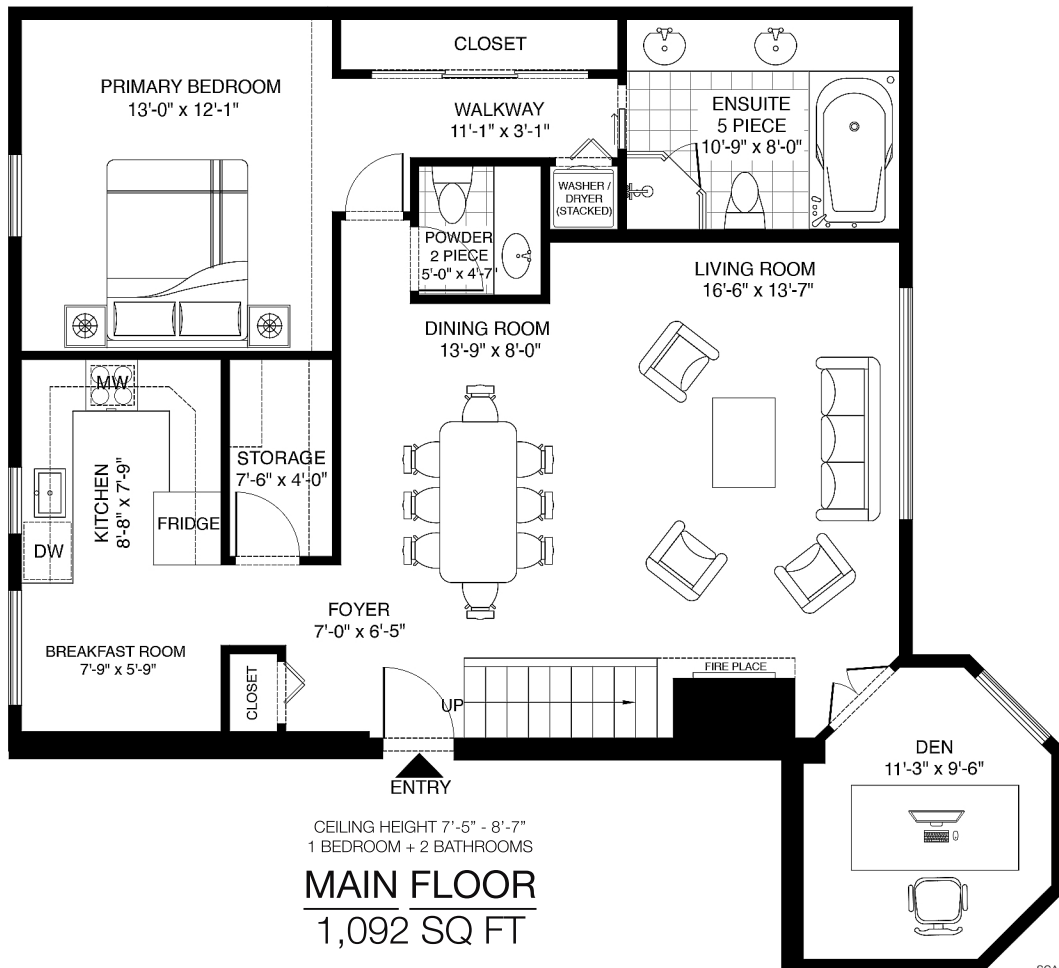
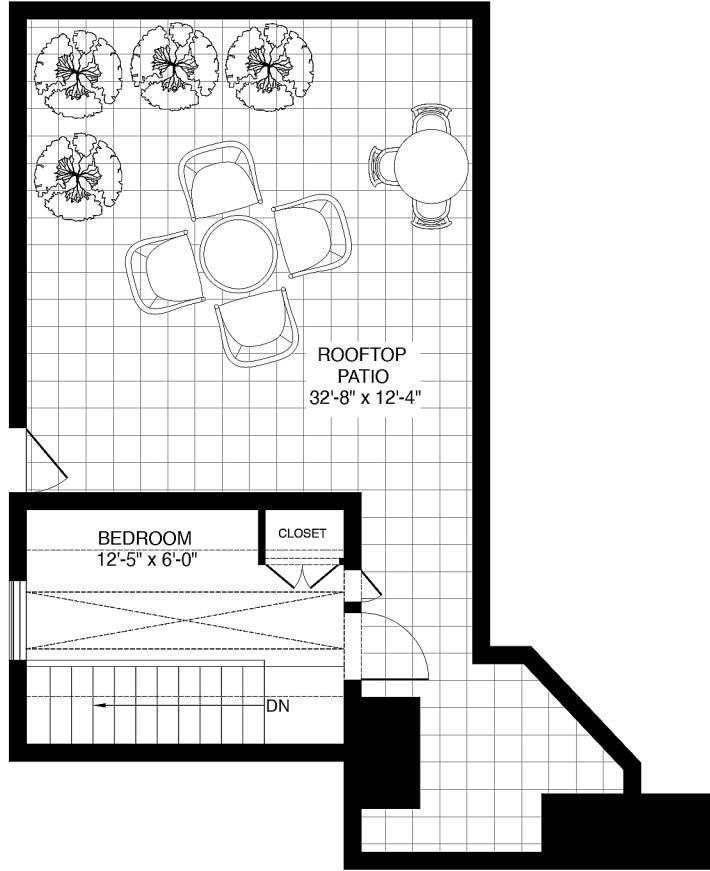
TOTAL INTERIOR: 1,215 SQ FT

TOTAL: 2 BEDROOMS + 2 BATHROOMS

TOTAL EXTERIOR: 406 SQ FT

ROOFTOP PATIO: 406 SQ FT

VAULTED CEILINGS  
1 BEDROOM  
**TOP FLOOR**  
123 SQ FT



Developed On: November 26, 2025 - Valid Until: May 26, 2026



This floor plan is intended for marketing purposes only and should not be used for relied upon for architectural or construction. Total area is based on interior measurements exclusive of exterior walls and open to below areas, while the information contained within this floor plan is deemed to be correct & not guaranteed. Additional areas will not match the total square footage. All offers are made to purchase alternatives and more units are developed accurately. BC Assessment or other plan may have been used for total square footage. This floor plan is covered under ESO (2% M.O.E) and cannot be reproduced, published, or distributed in whole or parts or incorporated with any other work. All room dimensions and floor areas must be considered approximate and are subject to independent verification. All rights reserved for Maude, Mackay & Co. ESO# issued to \$1,000,000.